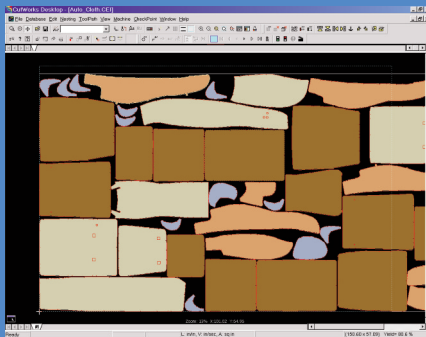
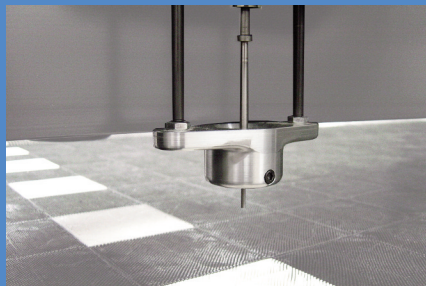


For precision, productivity, and performance, GERBERcutter® Z7 is the premium choice.

Cut intricate shapes, multiple hole sizes and notches in the full range of materials, including bilaminates, trilaminates, foam-backed and high loft fabrics and more.



CutWorks® automates cut part accuracy and optimizes throughput



Quick Change Drill (10 sec. bit changes)



## GERBERcutter Z7



**Precision. Productivity. Performance.**

### Precision.

- Knife Intelligence<sup>Plus</sup> features powerful new algorithms to predict, sense, and correct knife deflection during the cutting process, ensuring superior accuracy and quality of holes.
- Digitally-controlled Convey Under Vacuum maintains material stability to ensure cut part accuracy bite to bite.
- Intuitive touch screen interface provides ready access to setup and job information, ensuring repeatability of accurately cut parts.
- Enhanced knife guide design creates a more rigid and repeatable knife path, maximizing knife positional accuracy.
- Automatic knife sharpening feature assures a sharp knife for complete and accurately cut parts.

### Productivity

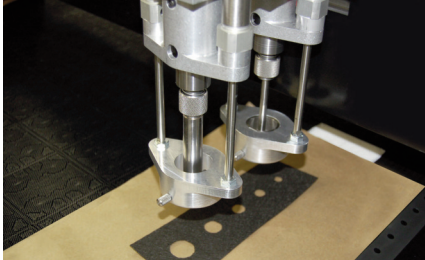
- CutWorks® ToolPath software automates the process of selecting an intelligent cut path to maximize throughput and part quality.
- The Quick Change Drill decreases time required for set-up and manual bit change-outs. When a bit needs to be replaced, it takes seconds instead of minutes and no tools are necessary.
- Holes 14 mm and larger can be cut instead of drilled, which is 5-10% faster, and bit changes are reduced or eliminated.
- The knife cooler/cleaner reduces fusing between parts, extends the knife's operating life, and keeps the cutting head components clean.
- The conveyor is mounted on durable roller bearings to reduce friction, saving energy during conveyance.
- Powerful reporting capabilities make it easy to monitor throughput and meet customer information and vendor compliance requirements.

### Performance.

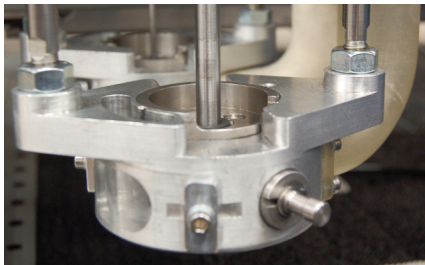
- Designed to operate with precision and without interruption at high speeds, GERBERcutter Z7 is the high performance high-ply cutter for around-the-clock production.

## Available Options & Services

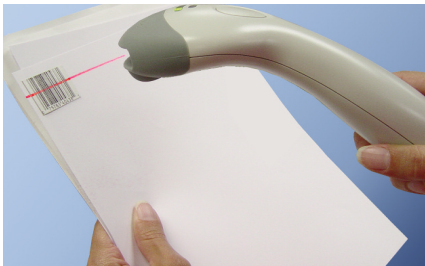
- Complete service and parts supply packages
- Comprehensive operator and technician training
- Lateral drive system
- Dual quick change drill
- Chaff collection system
- Knife size option: 0.2" / 0.25" / 0.313"
- Bar code reader



Quick change dual drill (2mm - 16mm)



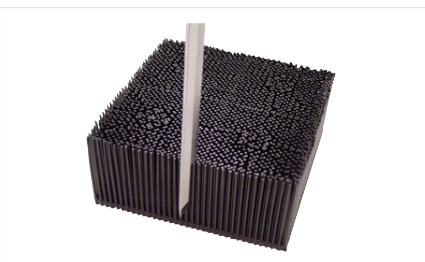
Dual drill with chaff collection system



Barcode reader



GERBERSpreader™ tension-free material spreading system



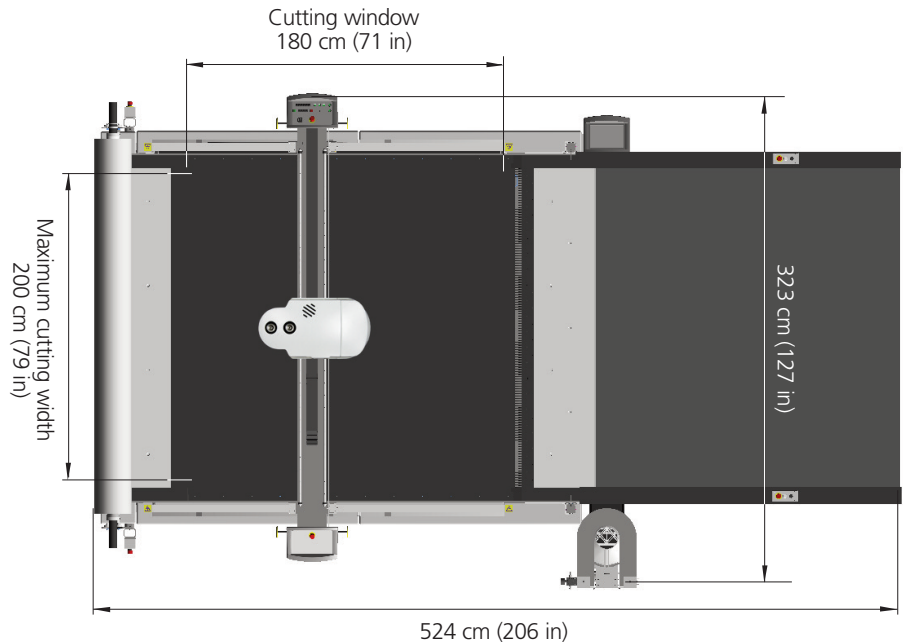
Only GERBER BRISTLE SQUARE® cutting surface allows the Gerber knife blade to penetrate without damage

## Technical Specifications

Characteristics		
Fabric height (compressed)	7,2 cm	2.83 in
Cutting speed (maximum)	30,5 m/min	1200 in/min
Throughput - average (depending on application)	8 m/min	315 in/min
Head acceleration (maximum)	2,4 m/s <sup>2</sup>	1/4 g
Table weight	4511 kg	9947 lbs
Table heights - available	80, 86, 91 cm	31.5, 34, 35.8 in
Power		
Control Power	3-wire 200V-240V, 1PH, 50/60 Hz, 20 A	
Table Vacuum	380/440V, 3 PH, 50/60 Hz, 80 A	
Average Energy Consumption	17 KWh to 20 KWh for 3 PH system	
Compressed Air Consumption	85 liters/min @ 6,8 bar	3 SCFM @ 100 PSI
Operating Environment		
Temperature (maximum)	43°C	110°F
Humidity (maximum)	80% (non-condensing)	
Vacuum System	up to 760 m above sea level	2500 ft above sea level
Noise	80 dBA	

## Cut Data File Specifications Supported

- Interface to open standard data formats produced by most CAD products
- Gerber AccuMark® native marker data



NOTE: Configurations vary according to options selected. Specifications are subject to change without notice.

Z Series is a trademark of Gerber Technology. GERBERcutter®, Knife Intelligence®, GERBER BRISTLE SQUARE® and AccuMark® are registered trademarks of Gerber Technology.

GERBERcutter products are patent protected.

Gerber Technology, Tolland, CT 06084 USA - Tel: +1(860) 871-8082  
 www.gerbertechnology.com - info@gerbertechnology.com  
 Copyright © 2010 Gerber Scientific Inc.  
 A Gerber Scientific Company - Form No. Z7\_E - 03022010